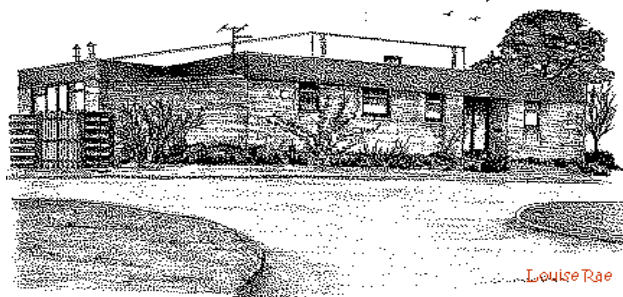


# Parrett and Axe News



## **School Year 2024-25** **September 2024** **No 1**

### **Diary Dates (Please keep!!)**

Tuesday 17 <sup>th</sup> & 24 <sup>th</sup> September, 1 <sup>st</sup> October	Hockey Club	3-4pm
Tuesday 17 <sup>th</sup> September	Little Wandle Year 1 parents meeting	5-6pm
Wednesday 18 <sup>th</sup> , 25 <sup>th</sup> , 2 <sup>nd</sup> October	STAMP Drama Club	3:15-4:15pm
Friday 20 <sup>th</sup> September	Jeans4Genes non uniform day	
Monday 23 <sup>rd</sup> & Wednesday 25 <sup>th</sup> September	Beaminster School open day	9-10am
Wednesday 25 <sup>th</sup> September	Flu vaccinations	
Tuesday 24 <sup>th</sup> September – Monday 30 <sup>th</sup> September	Scholastic book fair	3-4pm
Wednesday 2 <sup>nd</sup> October	Harvest Festival at church	9:30- 10:30am

### **Dear Parents**

It is with great pleasure that I welcome you back to school. A notable highlight for me this week was seeing all the children coming into school together full of excitement and enthusiasm.

I would like to take this opportunity to remind parents how important it is that your child attends school. May I remind you that school gates open at 8:30am and lessons begin promptly at 8:40am when the register will close. It is important that your child is in school by this time as every minute of education is important.

Thank you for your continued support and please remember that my office door is always open for you to come and talk about any concerns that you may have and I will also be on the gates every morning and available to have a chat.

**Mr Smith**

### **Data Sheets, Medical Information**

Please can the office have your child's Data Sheet. Please make changes to the data sheet as required, and return to school even if there are no changes to the data sheet I will require it back for our records. **This is a yearly Government requirement.**

### **Collection Arrangements**

If your child has a different arrangement for going home e.g. to walk home alone or going home with another child can you please either let the office know or the class teacher. Many thanks.

### **Wraparound Care**

We do still have some spaces for wraparound care. The session times are 07:30am - 08:30am & 15:00pm - 17:30pm, Monday to Friday, Term time only. If you would like to register your child then please complete the link as soon as possible to secure your space.

<https://forms.office.com/e/pupeFSzm3A>

### **Hockey Club**

Hockey club will return next week and will be held on Tuesdays after school and is open to all Year 4/5/6 children. Please complete the form below if your child would like to attend Hockey Club.

<https://forms.office.com/e/ehu92WZXdw>

### **Jeans for Genes Day**

On Friday 20<sup>th</sup> September there will be a non-uniform day in aid of jeans for genes day with a voluntary donation of £1.

### **Travelling Book Fair**

Scholastic Travelling Book Fair will be held in the school hall from 3pm from the 24<sup>th</sup> to 30<sup>th</sup> September. We would be extremely grateful if you can support the school with this book fair as the more money that is raised the more the school receives in rewards which enables our teachers to choose books for their classroom based on the commission that you have raised. A link is below with more details about the book fair.

[scholastic Book Fair](#)

### **Children Starting at Secondary School 2025**

If you have a child who will be starting secondary school in September 2025, applications must be made before 31<sup>st</sup> October 2024 and you will be informed of the outcome on 3<sup>rd</sup> March 2025.

### **Children Starting in Reception 2025**

If you have a child or know of a child who should be starting school in September 2025, applications must be made before 15<sup>th</sup> January 2025 and you will be informed of the outcome on 16<sup>th</sup> April 2025. Any applications after this date but before 16<sup>th</sup> April will be classed as a late application and you will not be informed until later in the year.

### **School Lottery**

If you haven't signed up yet have a look at the link. You have a chance to win every week with a guaranteed winner from our lottery group plus a chance to win the national prize of £25,000 for £1 a week. Also a percentage goes to the school for every ticket bought.

### **Hot School Meals**

Local Food Links are our hot school meal provider. To find out about the meals they provide, please visit <https://www.localfoodlinks.org.uk/> If you haven't received an activation code letter, please ask the school office for a code which is required when you use the system for the first time. Meals can be ordered, changed or cancelled 7 days in advance.

All Corfe and Chesil Key Stage 1 children are entitled to free school meals under the Government Universal Infant Free School Meals Scheme. Meals for Key Stage 2 children are very reasonable at £2.50 each.

Please log in to your LFL account and check that meals have been ordered and that you have noted the days where you need to send a packed lunch for your child. If you have any problems ordering meals during the holidays, please contact Local Food Links they will have staff that can help you.

### **Free School Meals, Pupil Premium**

If your child qualifies for free school meals, not only will they receive a healthy meal on every school day, they'll also get

- Access to free holiday clubs
- Extra money for their school towards more teachers and activities

It's easy to find out if you qualify - complete Dorset Councils confidential checker at [dorsetcouncil.gov.uk/free-school-meals](http://dorsetcouncil.gov.uk/free-school-meals) or telephone 01305 221090

If your child is in reception to year 2 and you receive qualifying benefits, you could get extra £££'s for your school! Apply for the Pupil Premium at [dorsetcouncil.gov.uk/pupil-premium](http://dorsetcouncil.gov.uk/pupil-premium)

### **ParentLine 5-19**

ParentLine 5-19 is a NHS text messaging service which allows parents and carers of school children aged 5-19 to gain confidential advice and support from the School Nursing team for issues such as:

- Healthy eating/weight management
- Toileting
- Sleep
- Development
- Behaviour
- Emotional health and wellbeing
- School refus

Parents/carers can send a text to the ParentLine number 07312263131 and a trained healthcare professional from the School Nursing team will respond during office hours 9-4 Monday to Friday during School term times.