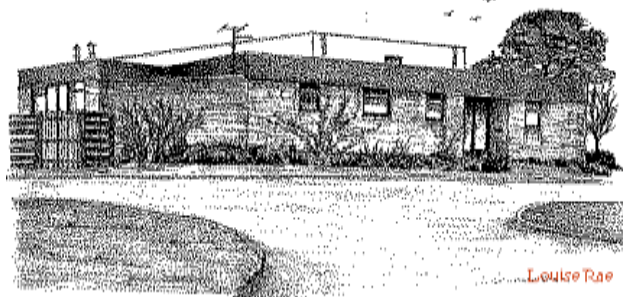


# Parrett and Axe News



## **School Year 2022-23** **October 2022** **No 2**

### **Diary Dates (Please keep!!)**

Every Wednesday in October	Drama Club	3pm – 4.00pm
Every Tuesday in October	Hockey Club	3pm – 4.00pm
Every Thursday in October	Lego Club	3pm – 4.00pm
Monday 10 <sup>th</sup> October	Harvest Service	1:45pm – 2:45pm
Friday 21 <sup>st</sup> October	Corfe Welly Walk	10:30am – 11:30am
Monday 24 <sup>th</sup> – Friday 28 <sup>th</sup> October	Half Term	
Friday 4 <sup>th</sup> November	Non-uniform day in aid of the PTFA Charity Ball	
Monday 7 <sup>th</sup> November	Bikeability 1	
Wednesday 9 <sup>th</sup> November	School Photographer – individual and siblings at school only (no family photos)	
Monday 14 <sup>th</sup> November	Flu Immunisations (all years)	

### **Data Sheets, Medical Information**

Please can the office have your child's Data Sheet, ICT form and blank medical forms. Please make changes to the data sheet as required, complete medical form and return to school even if there are no changes to the data sheet I will require it back for our records. This is a yearly requirement.

### **Class Fundraising - Christmas Cards**

The children's Christmas Cards have now been despatched to Class Fundraising and hopefully we will have the samples back shortly to allow you to purchase these.

### **Scholastic Book Fair**

Thank you so much to everyone who came and supported the Scholastic Book Fair, we made over £700 which is amazing! This means we earned a fantastic amount in Scholastic rewards to spend on a range of children's books for our school.

### **Harvest Service**

The whole school will be attending a Harvest Service at Mosterton Church on Monday 10<sup>th</sup> October at 1:45pm. Parents and guardians are welcome to attend. Please can we remind parents **NOT** to park in The Admiral Hood car park if they attending the service.

### **Harvest Festival Donations**

As part of our harvest festival, we are asking for donations for the Beaminster Food Bank. In these uncertain times, more and more families are having to visit food banks, in order to provide for their families. Please bring in any of the items below on Monday 10<sup>th</sup> October. These will be collected and taken down to the food bank by the school councillors

- Tinned goods - beans, meat, fruit, vegetables
- Rice, pasta, cereal
- Lentils, beans, pulses
- Jars - jam, sauces
- Tea and coffee
- Biscuits

### **Corfe Welly Walk**

The reception children will be taking part in a sponsored 'Welly Walk' on Friday 21<sup>st</sup> October to help raise money for the outdoor learning environment. They will be walking, running, hopping and skipping around the field and may even have to negotiate a few muddy obstacles along the way! Please remember to send your child into school with old clothes on and wellies in a separate bag.

### **PTFA**

We are holding a *Great Gatsby Ball* on the 18<sup>th</sup> November 2022, tickets are £37 each. Please note these prices include a welcome drink, 2 course meal, casino with play money and a live band. There will also be a raffle on the night. Last date to buy tickets will be Friday 11<sup>th</sup> November. It really is a fantastic evening, we can't wait to see you there. The more the merrier!!

### **Non-uniform Day**

There will be a non-uniform day on Friday 4<sup>th</sup> November with a voluntary donation of £1 to help raise money for the PTFA and the Charity Ball.

### **Open Evening**

We will be holding an Open Evening on Wednesday 12<sup>th</sup> October from 5pm to 6pm for any prospective parents who would like to have a look around the school. If you know any parents who have a child starting school in September 2023 please let them know.

### **Children Starting at Secondary School 2023**

If you have a child who will be starting secondary school in September 2023, applications must be made before 31<sup>st</sup> October 2022 and you will be informed of the outcome on 1<sup>st</sup> March 2023. Any applications after this date but before 1<sup>st</sup> March will be classed as a late application and you will not be informed until later in the year.

### **Children Starting in Reception 2023**

If you have a child or know of a child who should be starting school in September 2023, applications must be made before 15<sup>th</sup> January 2023 and you will be informed of the outcome

on 16<sup>th</sup> April 2023. Any applications after this date but before 16<sup>th</sup> April will be classed as a late application and you will not be informed until later in the year.

### **School Lottery**

If you haven't signed up yet have a look at the link. You have a chance to win every week with a guaranteed winner from our lottery group plus a chance to win the national prize of £25,000 for £1 a week. Also a percentage goes to the school for every ticket bought.

<https://www.yourschoollottery.co.uk/lottery/school/Parrett-And-Axe-Primary>

### **Hot School Meals**

Local Food Links are our hot school meal provider. To find out about the meals they provide, please visit <https://www.localfoodlinks.org.uk/> The ordering system can be found at <https://www.myschoolmeals.co.uk> If you haven't received an activation code letter, please ask the school office for a code which is required when you use the system for the first time. Meals can be ordered, changed or cancelled 7 days in advance.

All Corfe and Chesil Key Stage 1 children are entitled to free school meals under the Government Universal Infant Free School Meals Scheme. Meals for Key Stage 2 children are very reasonable at £2.40 each.

Please log in to your LFL account and check that meals have been ordered and that you have noted the days where you need to send a packed lunch for your child. If you have any problems ordering meals during the holidays, please contact Local Food Links they will have staff that can help you.

<b><u>Autumn 2022</u></b>			
<b>CHILDREN IN SCHOOL</b>  Mon 5 <sup>th</sup> Sept To Fri 16 <sup>th</sup> Dec	<b>Half Term</b>  <b>Christmas Holidays</b>	Mon 24 <sup>th</sup> Oct To Fri 28 <sup>th</sup> Oct  Mon 19 <sup>th</sup> Dec To Fri 30 <sup>th</sup> Dec	<b>Inset Days</b> Thurs 1 <sup>st</sup> sept Fri 2 <sup>nd</sup> Sept
<b><u>Spring 2023</u></b>			
<b>CHILDREN IN SCHOOL</b>  Wed 4 <sup>th</sup> Jan To Fri 31 <sup>st</sup> March	<b>Half Term</b>  <b>Easter Holidays</b>	Mon 13 <sup>th</sup> Feb To Fri 17 <sup>th</sup> Feb  Mon 3 <sup>rd</sup> Apr To Fri 14 <sup>th</sup> Apr	<b>Public Hols</b> Mon 2 <sup>nd</sup> Jan  <b>Inset Days</b> Tues 3 <sup>rd</sup> Jan
<b><u>Summer 2023</u></b>			
<b>CHILDREN IN SCHOOL</b>  Tues 18 <sup>th</sup> Apr To Fri 21 <sup>st</sup> Jul	<b>Half Term</b>  <b>Summer Holidays</b>	Mon 29 <sup>th</sup> May To Fri 2 <sup>nd</sup> Jun  Mon 24 <sup>th</sup> Jul To TBC	<b>Public Hols</b> Mon 1 <sup>st</sup> May  <b>Inset Days</b> Mon 17 <sup>th</sup> Apr Mon 5 <sup>th</sup> June